



# FLASHING AROUND A CHIMNEY/ROOF TO WALL



## Why This Is Important

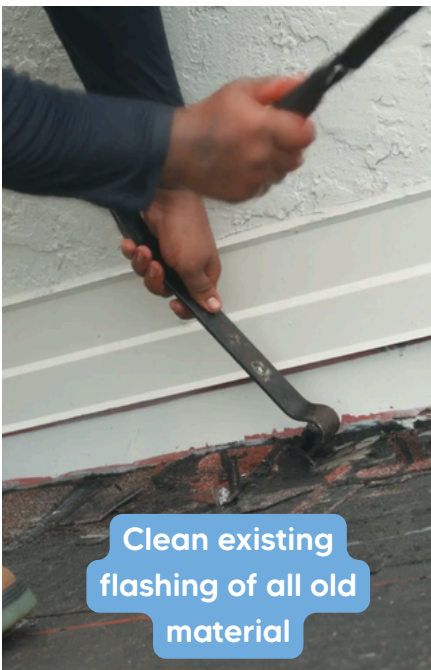
Chimneys and roof to wall areas are one of the most common leak spots on a roof. Proper flashing stops water from getting behind shingles or running into the house.

A clean, sealed chimney keeps the home dry and the roof looking sharp.



## Inspect the Existing Flashing

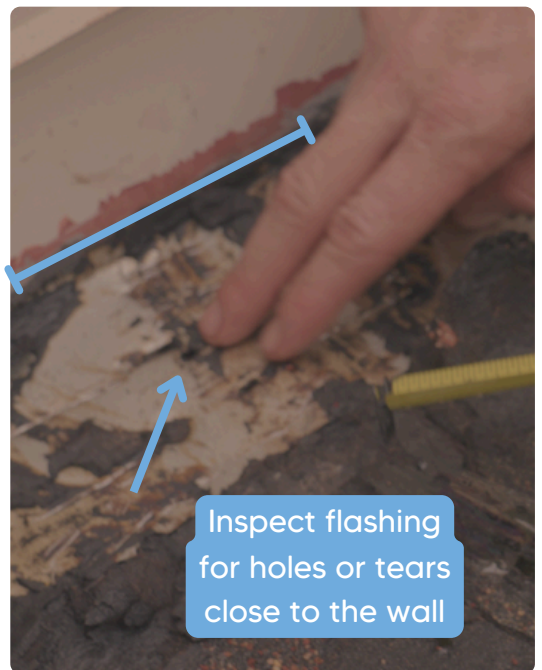
- First step is to clean all roofing material off of existing flashing by cleaning it, a hammer and prybar work good for this.
- Before continuing check the flashing around the chimney. If it's in good shape (no rust, holes, or tears near the chimney), you can sometimes reuse it.
- If it's damaged, tears, rust or old, replace it with new flashing.



Clean existing flashing of all old material



Look for rust on the roof to wall flashing, any rust = replacement needed



Inspect flashing for holes or tears close to the wall

# 1

## Prepare the Flashing Area

- Clean existing flashing if reusing.
- Run **underlayment of choice up the roof to wall 6"-8"** before continuing installing new flashing. Crease it tight at the angle change.
- Cut flashing pieces to fit tight against the chimney wall.

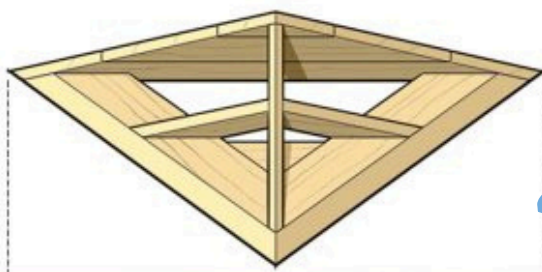


# 2

## Install Crickets When Needed

- If back side of chimney is greater than 30" a cricket has to be installed.

A "cricket" is just a small, peaked wood structure built on the high side of a chimney to move rainwater and debris around the back side of the chimney



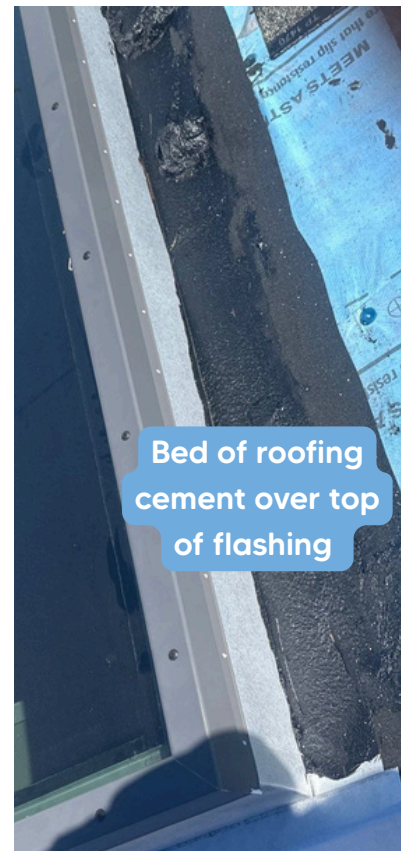
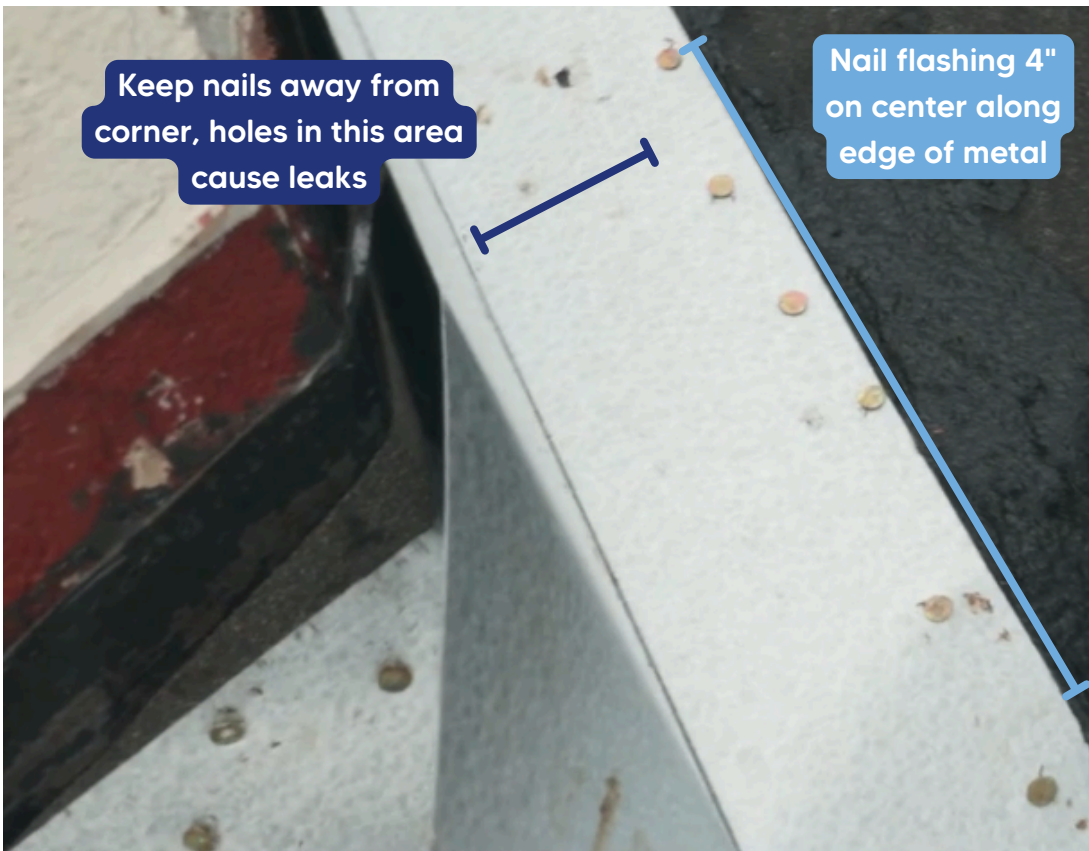
Framed Cricket



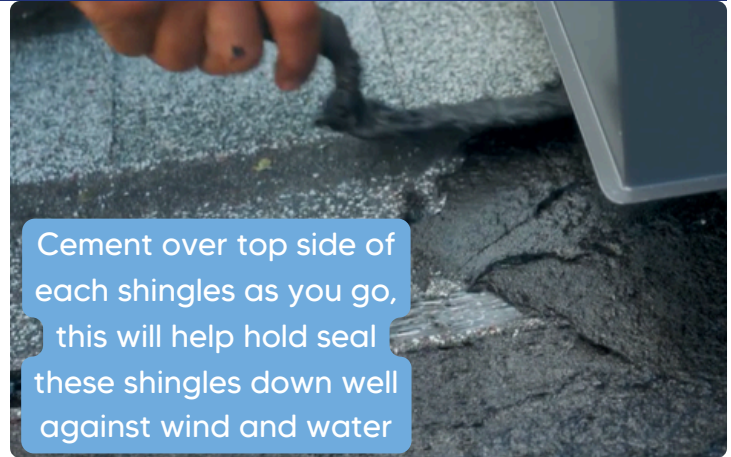
# 3

## Install New Roof-to-Wall Flashing

- Install New Roof-to-Wall Flashing
- Spread a bed of roofing cement under the flashing area where it sits on the roof.
- Nail the flashing down every **4 inches** at the outer edge.
- **Do not nail near the inner part where water flows.**
- **Cut the corners of the flashing so it folds tight—this helps water run off cleanly. Make the corner bends so they provide positive drainage and install polyurethane caulking at the corner.**
- Bottom flashing sits over top of shingle.



- Add roofing cement along the full edge of the flashing.
- As you lay shingles over the flashing, place a bed of cement under each one—this is called “step cementing.”
- Make sure each shingle is pressed in and sealed into the cement.



Cement over top side of each shingles as you go, this will help hold seal these shingles down well against wind and water

## » Counter Flashing Options

### Option 1: New Siding or Stucco

- If siding is damaged or removed, recommend new siding or stucco to the project manager.
- In this case the house wrap and siding will be installed directly over the flashing.

### Option 2: Surface-Mount Counter Flashing

- If siding stays, install surface-mount counter flashing.
- Snap a chalk line first to keep it straight.
- Use the right fasteners depending on the surface:

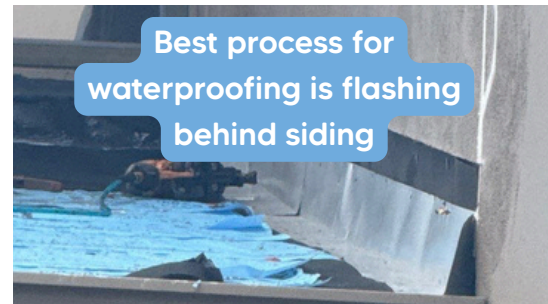
Wood: Screws with waterproof neoprene washers

Concrete or stucco: Tap-cons or masonry screws

- Embed a high-quality water block sealant behind the flashing.
- Use polyurethane sealant across the top edge to seal it tight. Corners and overlaps should be cut tight and look clean.
- Advantages: Inexpensive. Disadvantage: Least aesthetic option.

### Option 3: Surface-Mount “Reglet” flashing

for stucco/bricks/block specifically, the stone is grinded into and then flashing tapped inside, it seals better and looks better than a surface mount.



Best process for waterproofing is flashing behind siding



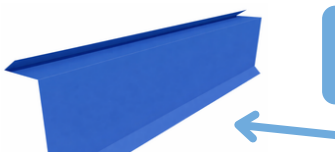
New siding over new flashing, cleanest look



Surface mount flashing gets fastened in over stucco every 6" clean caulking bead over top



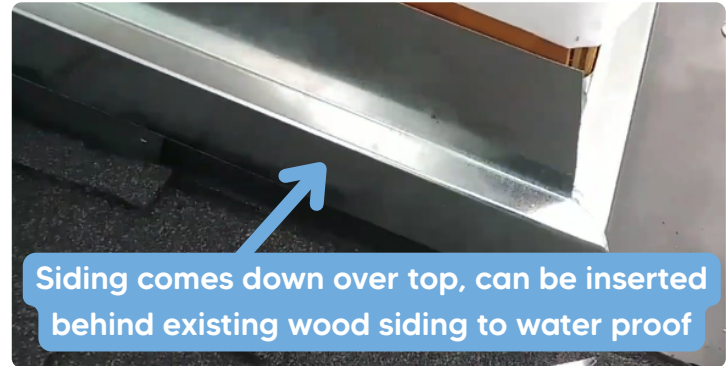
Fastened every 6"



“Reglet” is metal that taps into a grinded out space and stops water from getting behind

# Special Situations Z-Bar Flashing

- For wood siding or Hardie board, you may need a Z-Bar.
- Cut the siding where the top of the L-flashing ends.
- Slide the Z-Bar behind the siding carefully to not damage it and then re-fasten it in place to cover the top of the flashing and seal it up.
- This flashing is also great for new construction as it allows future roofs to go right under it without removing siding.



## Important notes:

- Flashing is tight to chimney and nailed correctly
- Corners are folded, sealed, and tight
- No nails/ cuts near the inside edge of flashing
- Roofing cement is smooth and covers all edges
- Counter flashing is sealed, level, and watertight
- Z-Bar/reglet are used properly where needed



Flashing Around a Chimney and Roof to Wall

Scan Code for  
Training Video 