



HOW TO INSTALL HIP & RIDGE CAP SHINGLES



Why This is Important

Cap shingles cover the top ridges and roof hips where two slopes meet. If installed wrong, water can leak in, these are also a huge part of the end products visual look.

Doing this right gives the roof a strong seal and a clean, finished look.



1

Prep the Roof Ridge or Hip

- Make sure the main shingles are finished on both sides of the roof.
- All ridge and hip shingle lines should be cleanly cut and straight, no loose edges or uneven cuts, they should be fastened tight with roofing nails.



2

Crease & Snap Your Chalk Line

- Take a cap shingle and crease it in the middle so it bends nicely over the ridge or hip.
- Place cap one centered at each side of the run and mark the spot.
- Snap a chalk line from top to bottom along the center to guide your cap shingle layout. (Use a medium fading chalk so it will disappear in first rains)



3

Finish First Side and Chalk Line For 2nd

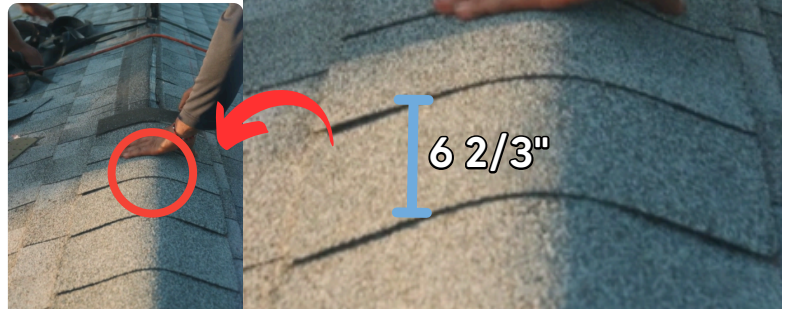
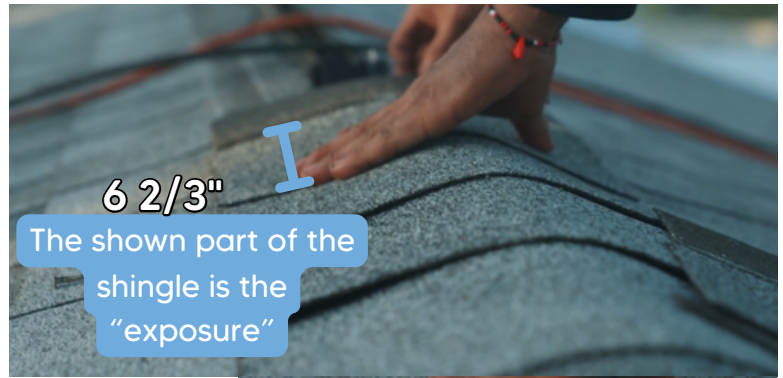
- Install the Starter Cap Shingle
- Cut a starter cap shingle (a regular shingle in half) and place it at the bottom hip or starting point of the ridge.
- Set the starter in a small bed of roofing cement to hold it in place.



4

Lay Cap Shingles One at a Time

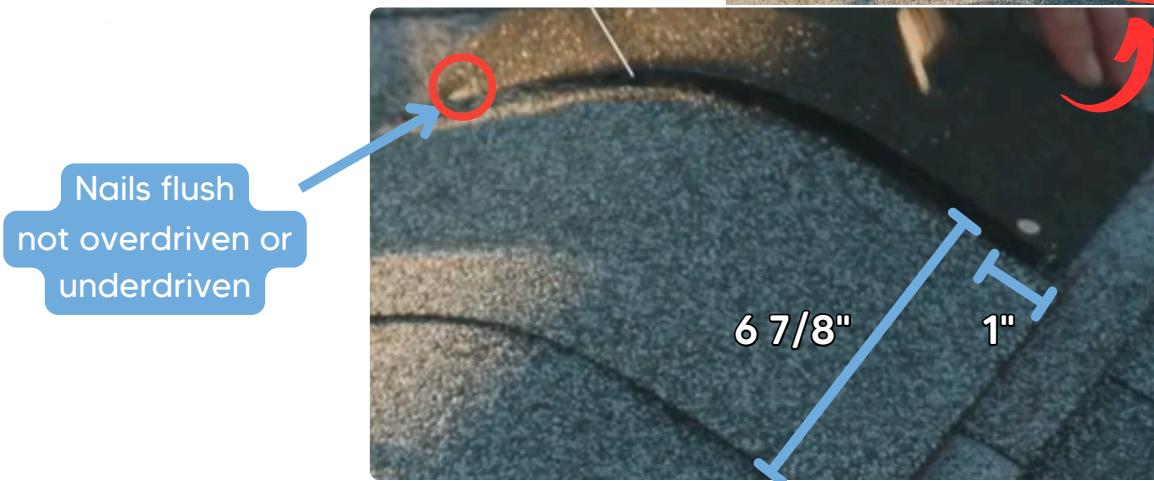
- Carefully tear cap shingles apart along the factory perforation, go slow to avoid tearing the shingle itself
- Place each cap shingle with a **6 2/3" exposure for GAF (that's how much of each shingle shows)**. This is important to not waste material.
- Make sure they are centered and **line up with chalk line**.



5

Nailing Cap Shingles

- Each cap shingle gets two nails.
- Nails should be placed **6 7/8"** inches back from the exposed edge, and **1/2"-1"** in from each side.
- Always nail straight and flush not overdriven or sticking up.



These are nail locations for GAF, each shingle will be a little different. Always check manufacturer instructions

» Final Ridge Cap

At ridge end at the final cap we place roofing cement over the final nails and then weigh down a half cap to seamlessly finish the cap



Completed final cap cemented down

✗ What Not to Do When Installing Hip/Ridge:

- Don't let caps go crooked—use the chalk line to keep them straight.
- Don't nail to far from the edges or overdrive, this can cause blow offs in strong wind.

Recap!

- Cap shingles are straight and follow the chalk line
- 6 2/3" exposure is consistent. Otherwise it is easy to waste shingles and run out of material.
- Starter shingle is secured with cement
- No crooked/overdriven/underdriven nails or crooked caps



How to Install Hip and Ridge Cap Shingles

Scan Code for Training Video

