



HOW TO INSTALL A SOLAR ATTIC FAN

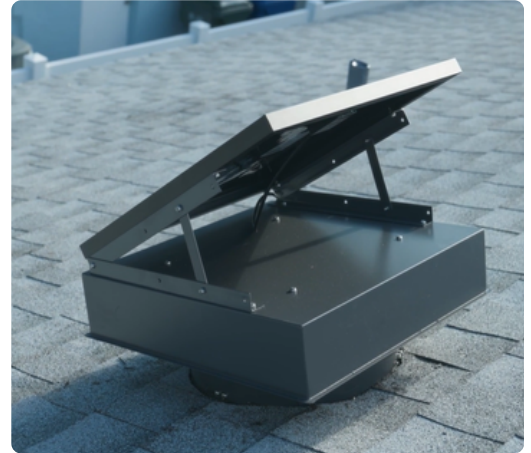


Purpose:

To install water proof solar attic fans that pull hot air out of the attic, helping homes stay cooler and reducing energy use.

Why Solar Attic Fan:

A solar attic fan helps remove heat from the attic using free energy from the sun. This makes the home more energy-efficient and helps the roof last longer. But it only works if installed in the right spot and sealed properly.



1

Choose the Right Location

- The fan should go 4–6 feet down from the roof ridge.
- Center it on the house if possible. Each model is rated for a certain square footage, a large house may need a few fans evenly distributed.
- The solar panel should face south for the most sun. (East/West can also work)
- Avoid shaded areas (like under trees or big chimneys).
- Always check with the homeowner and project manager for final placement—this is also about how it looks from the street.
- Most fans go on the back of the home where they're less visible.



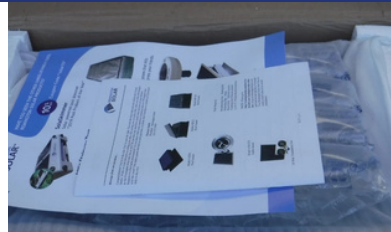
Toward back of home is usually best for aesthetics. Facing South or West are best.



2

Solar Attic Fan - Opening & Setup

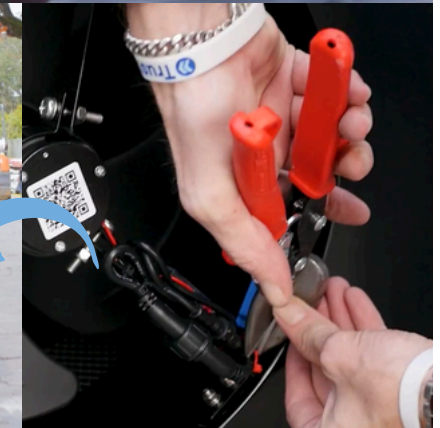
- When opening a solar attic fan, work carefully and save all parts.
- Save the hardware box – it will be needed later during installation
- Give the warranty paperwork to the homeowner so they can register it
- Some models have zip ties holding the thermostat up
- These must be cut so the thermostat can hang down freely
- If this is not done, the fan can overheat and fail



Save hardware and warranty



Cut the ties so the thermostat can hang down



3

Mark and Measure

- Mark the location for the fan.
- Measure the circular cutout size using the size of the fan base. Chalk line is a great tool for creating a circular template. Remove underlayment.
- If the house is 24" on center, **place the fan directly between two rafters.**
- If the house is 16" on center, place the fan over the center of a rafter.



4

Cut the Hole

- Use a reciprocating saw to cut the hole. Make sure your blade is set to a **safe depth**.
- Once cut, remove the wood and clean up the area. Install a screw or hook with a large head into the middle of the wood cutout first before cutting it, this gives something to grab so the wood doesn't piece fall down into the attic.



5

Prep with Underlayment & Shingles

- Lay peel and stick down in the area and bring shingles up to the bottom edge of the hole.
- This gets the area ready for the attic fan install.
- Spread a bed of roofing cement under where the fan flashing will sit and over the shingle below.



5

Prep with Underlayment & Shingles

- Before installing the fan make sure that any thermostat is in the right position, on certain models a zip tie has to be cut to allow the thermostat to be repositioned.
- Spread a bed of roofing cement under the flashing.
- Place the fan down and press firmly.
- Install flat-head screws to hold the fan in place.
- Then, apply a bed of roofing cement around the entire fan flashing to seal it completely, overlap the cement at flashing edges.
- Listen for the fan moving.



6

Shingle Around the Fan

- Cut shingles tight around the fan base.
- Use “step cementing”—apply a thin bed of cement under each shingle as you go up and around the flashing.



7

Attach the Solar Panel Bracket

- Use the bracketing hardware and screws that came with the fan (3 different tilt options).
 - Make sure the panel is secure and tight.
 - Adjust the angle and height of the panel so it gets the most sun—usually that means tilted toward the south, sometimes it will be toward east/west.
- Remember confirm placement with homeowner.**



Register any warranties with the homeowner

- Remington models and most solar attic fans come with a warranty.
- Turn this over to the customer and assist them in registering the warranty for their product.

Re Cap:

- » Fan is centered and 4-5' from ridge
- » Flashing is sealed with cement and screwed tight
- » Shingles are tight with step cementing
- » Solar panel is aimed for most sun
- » You hear the fan running and feel air pulling from the attic



How to Install a Solar Attic Fan

Scan Code for Training Video

